

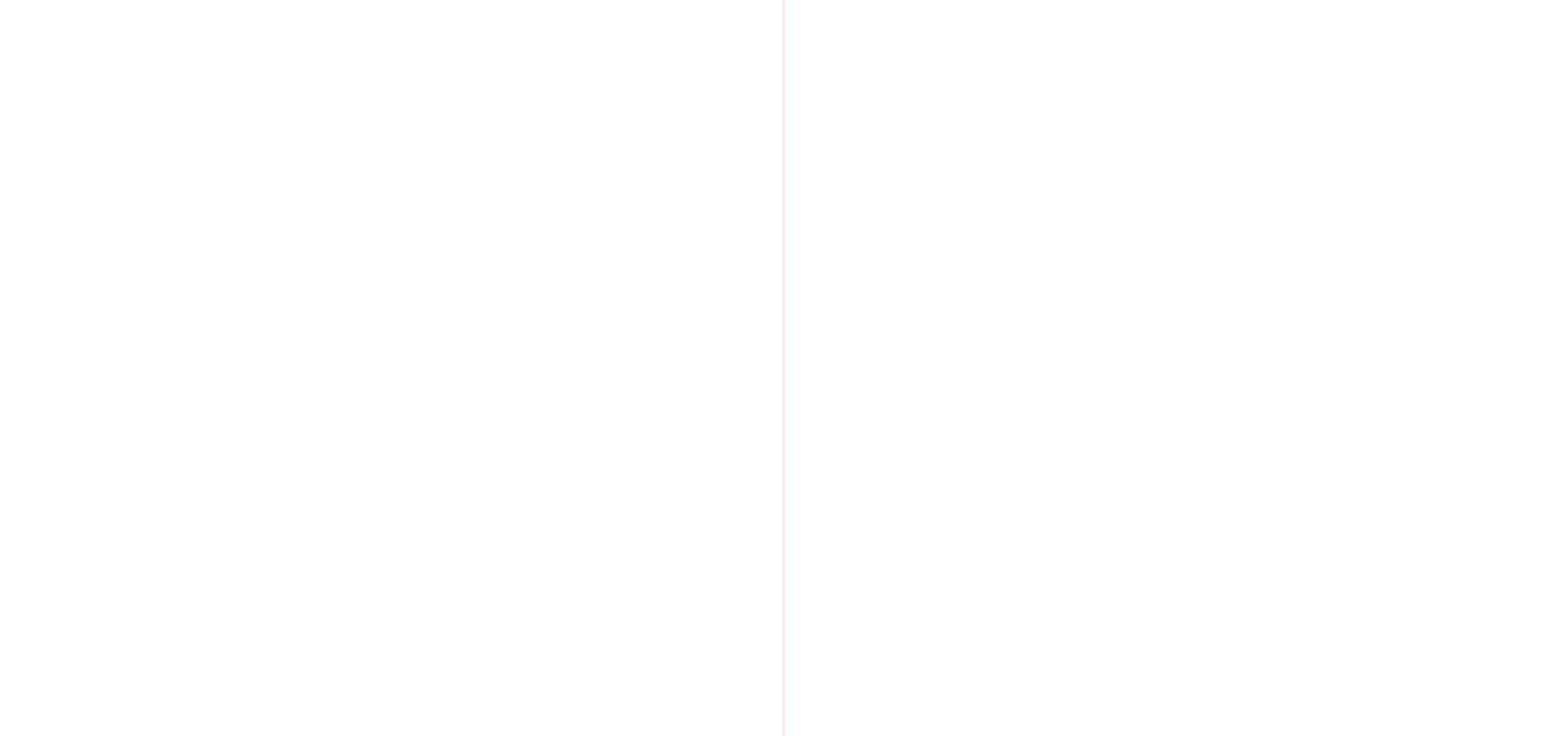
# HOME COLLECTION

2023



NEW CLASSIC





At Naim, we don't want anything to come between you and the music you love. Everything we do, each design decision we make, is about how we can create a deeper emotional connection to the music. We want to take you on a journey that begins from a standalone separate to a multi-functional, fully integrated ultimate Hi-Fi system. With our new Classic range of separates, both performance and ambition take on new meaning. This is our core range of systems for music in the home. Whether you are building a complete system or taking your first steps into separates hi-fi, you will find unparalleled clarity, tone and musical depth.



# WHICH NAIM IS RIGHT FOR YOU?

## The world of high-fidelity audio

As you move through our ranges, Naim core functionality is retained but the listening experience becomes increasingly immersive. The Mu-so range of wireless music systems, the Uniti range of all-in-one players, two-box systems with network players or CD player, integrated amplifiers... From an all-in-one system to a full separates hi-fi, Naim's uncompromising attitude to engineering enables you to hear every single note as part of a whole.

### ALL-IN-ONE SYSTEM

Range: Mu-so



Loudspeaker - Streamer - Preamplifier  
Power Amplifier - Power Supply

### ALL-IN-ONE PLAYER

Range: Uniti



Streamer - Preamplifier  
Power Amplifier - Power Supply

### INTEGRATED SYSTEM

Ranges: SI and XS



Streamer - Power Supply



Preamplifier - Power Amplifier  
Power Supply

### MARQUE SEPARATES

Ranges: New Classic, 500 and Statement



Streamer



Preamplifier



Power Amplifier



Power Supply

---

# NEW CLASSIC

Welcome to a new era in sound

Fifty years in the making, the Naim Classic Series embodies exceptional hi-fi separates that seamlessly combine to create the music system you have always wanted. Take your system to the next level with New Classic. Designed and engineered in England, the thrilling new 200 & 300 Series models include the NSC 222, NAP 250, NPX 300, plus the NSS 333, NAC 332, NAP 350, NVC TT and NPX TT. Sophisticated yet simple to use, these timeless products aim to bring you years of listening pleasure.

---





---

# KEY POINTS

- **Simple system building**

Now more flexible than ever, our addition of balanced connectivity means New Classic can integrate into a wider range of systems with ease.

- **Legacy component integration**

Source, source power-supply and power amplification backward compatibility using our comprehensive range of newly developed cables.

- **Concise range**

The streamlined range makes it simpler to build and grow your ideal music system.

- **Lower power consumption**

All units have a 0.5 Watt standby option to reduce their power usage.

- **Authority in sound**

Our most powerful Classic amplifier range ever, offering greater flexibility over loudspeaker choice.

- **Timeless design**

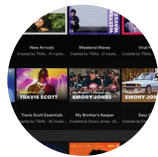
Superlative build quality and beautiful design; engineered in the UK.

---





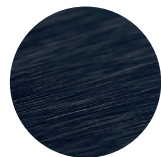
XLR  
balanced



Integrated  
streaming services



Multiroom  
capable



Brushed  
Aluminium



Colour LCD  
glass screen



Compatibility  
between ranges







NSC 222

|                                  |  |
|----------------------------------|--|
| Collection                       | 200 Series   |
| Type                             | Streamer, Preamplifier   |
| Analogue inputs                  | <ul style="list-style-type: none"><li>1 x moving magnet phono</li><li>1 x 8-pin DIN (compatible with 5-pin DIN cables)</li><li>1 x RCA pair (stereo)</li></ul>   |
| Analogue outputs                 | <ul style="list-style-type: none"><li>1 x XLR pair</li><li>1 x RCA pair</li><li>1 x 6.35mm headphone jack</li></ul>  |
| USB                              | 2 x USB Type A socket (front and rear - 1.6A charge)   |
| Digital inputs (S/PDIF)          | <ul style="list-style-type: none"><li>2 x Optical TOSLINK (up to 24bit/96kHz)</li><li>1 x coaxial RCA (up to 24bit/192kHz, DoP 64Fs)</li><li>1 x coaxial BNC (up to 24bit 192kHz, DoP 64Fs)</li></ul>  |
| Audio formats                    | <ul style="list-style-type: none"><li>WAV - up to 32bit/384kHz</li><li>FLAC and AIFF - up to 24bit/384Hz</li><li>ALAC (Apple Lossless) - up to 24bit/384Hz</li><li>MP3 - up to 48kHz, 320kbit (16 bit)</li><li>AAC - up to 48kHz, 320kbit (16 bit)</li><li>OGG and WMA - up to 48kHz (16 bit)</li><li>DSD - 64 and 128Fs</li><li>M4A - up to 48kHz, 320kbit (16 bit)</li></ul> Gapless playback supported on all formats |
| Network                          | Ethernet (10/100Mbps), Wi-Fi (802.11 b/g/n/ac)   |
| Typical use consumption          | 25W  |
| Network standby mode consumption | <2W  |
| Standby mode consumption         | <0.5W  |
| Mains Supply                     | 115V or 230V, 50/60Hz  |
| Dimensions (HxWxD)               | 3 <sup>5</sup> / <sub>8</sub> x 17 x 12 <sup>1</sup> / <sub>2</sub> " (9.15 x 43.2 x 31.75cm)  |
| Weight                           | 24.25lbs (11kg)  |



NAP 250

|                     |   |
|---------------------|---|
| Collection          | 200 Series  |
| Type                | Power Amplifier   |
| Power output        | 100W 8Ω @0.1% THD+N   |
| Gain                | +29dB   |
| Inputs              | <ul style="list-style-type: none"><li>2 x 47kΩ True balanced via XLR</li><li>1 x 34kΩ singled ended via legacy adaptor lead</li></ul> |
| Frequency Response  | -3dB @ 1.4Hz to 100kHz  |
| Passive consumption | 26W   |
| Standby consumption | <0.5W   |
| Mains supply        | 115V or 230V, 50/60Hz   |
| Dimensions (HxWxD)  | 3 <sup>5</sup> / <sub>8</sub> x 17 x 12 <sup>1</sup> / <sub>2</sub> " (9.15 x 43.2 x 31.75cm)   |
| Weight              | 37.04lbs (16.8kg)   |



NPX 300

|                           |  |
|---------------------------|--|
| Collection                | 200 & 300 Series   |
| Type                      | Power supply   |
| Standby Power Consumption | <0.5W  |
| Power Supply Output       | Type 3, Type 4   |
| USB                       | Micro USB socket (for updates)                                     |
| Mains Supply              | 115V or 230V, 50/60Hz  |
| Dimensions (HxWxD)        | 3 <sup>5⁄8</sup> x 17 x 12 <sup>1⁄2"</sup> (9.15 x 43.2 x 31.75cm) |
| Weight                    | 31.75lbs (14.4kg)  |



NSS 333

|                                  |  |
|----------------------------------|--|
| Collection                       | 300 Series   |
| Type                             | Streamer   |
| USB                              | 2 x USB Type A socket (front and rear - 1.6A charge)   |
| Analogue outputs                 | <ul style="list-style-type: none"><li>1 x XLR pair</li><li>1 x RCA pair</li><li>1 x 5 pin DIN</li></ul>  |
| Digital inputs (S/PDIF)          | <ul style="list-style-type: none"><li>2 x Optical TOSLINK (up to 24bit/96kHz)</li><li>1 x coaxial RCA (up to 24bit/192kHz, DoP 64Fs)</li><li>1 x coaxial BNC (up to 24bit 192kHz, DoP 64Fs)</li></ul>  |
| Digital outputs (S/PDIF)         | <ul style="list-style-type: none"><li>1 x coaxial BNC (up to 24bit 192kHz)</li></ul>   |
| Audio formats                    | <ul style="list-style-type: none"><li>WAV - up to 32bit/384kHz</li><li>FLAC and AIFF - up to 24bit/384Hz</li><li>ALAC (Apple Lossless) - up to 24bit/384Hz</li><li>MP3 - up to 48kHz, 320kbit (16 bit)</li><li>AAC - up to 48kHz, 320kbit (16 bit)</li><li>OGG and WMA - up to 48kHz (16 bit)</li><li>DSD - 64 and 128Fs</li><li>M4A - up to 48kHz, 320kbit (16 bit)</li></ul> Gapless playback supported on all formats |
| Network                          | Ethernet (10/100Mbps), Wi-Fi (802.11 b/g/n/ac)   |
| Typical use consumption          | 25W  |
| Network standby mode consumption | <2W  |
| Standby mode consumption         | <0.5W  |
| Mains Supply                     | 115V or 230V, 50/60Hz  |
| Dimensions (HxWxD)               | 3 <sup>5⁄8</sup> x 17 x 12 <sup>1⁄2"</sup> (9.15 x 43.2 x 31.75cm)   |
| Weight                           | 24.25lbs (11kg)  |



NAP 350

|                     |   |
|---------------------|---|
| Collection          | 300 Series  |
| Type                | Power Amplifier   |
| Power output        | 175W 8Ω @0.1% THD+N   |
| Gain                | +29dB   |
| Inputs              | <ul style="list-style-type: none"><li>1 x 47kΩ True balanced via XLR</li><li>1 x 34kΩ singled ended via legacy adaptor lead</li></ul> |
| Frequency Response  | -3dB @ 1.4Hz to 100kHz  |
| Passive consumption | 24W (idle)  |
| Standby consumption | <0.5W   |
| Mains supply        | 115V or 230V, 50/60Hz   |
| Dimensions (HxWxD)  | 3 <sup>5</sup> / <sub>8</sub> x 17 x 12 <sup>1</sup> / <sub>2</sub> " (9.15 x 43.2 x 31.75cm)   |
| Weight              | 36.38lbs (16.5kg)   |



NAC 332

|                          |   |
|--------------------------|---|
| Collection               | 300 Series  |
| Type                     | Preamplifier  |
| Analogue inputs          | <ul style="list-style-type: none"><li>2 x 5 pin DIN</li><li>1 x 8 pin DIN (compatible with 5 pin DIN)</li><li>2 x XLR pair (stereo)</li><li>3 x RCA pair (stereo)</li></ul> |
| Analogue outputs         | <ul style="list-style-type: none"><li>1 x XLR pair</li><li>1 x RCA pair</li><li>1 x 6.35mm headphone jack</li></ul>   |
| USB                      | Micro USB socket (for updates)  |
| Typical use consumption  | 20W   |
| Standby mode consumption | <0.5W   |
| Mains supply             | 115V or 230V, 50/60Hz   |
| Dimensions (HxWxD)       | 3 <sup>5</sup> / <sub>8</sub> x 17 x 12 <sup>1</sup> / <sub>2</sub> " (9.15 x 43.2 x 31.75cm)   |
| Weight                   | 24.25lbs (11kg)   |



| NVC TT                |   |   |
|-----------------------|---|---|
| Collection            | 300 Series  |   |
| Type                  | Phono Stage   |   |
|                       | MM  | MC (low & high gain)  |
| Gain                  | 42dB  | 61dB low gain and 67dB high gain (switchable)   |
| Signal to noise ratio | 83dB ref 5mV A-wtd  | 84dB ref 0.5mV A-wtd (both gain settings)   |
| RIAA accuracy         | +/-0.1dB  | +/-0.1dB  |
| IEC cut               | (Partial) -2dB at 20Hz and -3dB at 14Hz   | (Partial) -2dB at 20Hz and -3dB at 14Hz   |
| Cross talk            | >75dB   | >75dB   |
| Max output signal     | 8Vrms   | 8Vrms   |
| THD+N                 | <0.005% ref 50mV input  | <0.005% ref 1.5mV input   |
| Loading               | 47kΩ and 100pF  | 16 selectable resistive values:<br>1000Ω, 600Ω, 430Ω, 330Ω, 250Ω, 215Ω, 185Ω, 165Ω, 150Ω, 140Ω, 125Ω, 115Ω, 105Ω, 100Ω, 90Ω, 85Ω                                |
|                       |   | 16 selectable capacitive values:<br>100pF, 400pF, 700pF, 1000pF, 1300pF, 1600pF, 1900pF, 2200pF, 2500pF, 2700pF, 3100pF, 3400pF, 3700pF, 4000pF, 4300pF, 4600pF |
| Headroom              | 22dB ref 5mV input  | 23dB ref 0.5mV input low gain setting<br>17dB ref 0.5mV high gain setting   |
| Power supply input    | Type 1  |   |
| Analogue inputs       | 1 x Stereo RCA  | 1 x Stereo RCA  |
| Analogue outputs      | <ul style="list-style-type: none"><li>1 x RCA pair (stereo)</li><li>1 x 5 pin DIN</li><li>1 x 8 pin DIN</li></ul> |   |
| Dimensions (HxWxD)    | 2 <sup>3/4</sup> x 8 <sup>3/8</sup> x 12 <sup>1/2"</sup> (7 x 21.4 x 31.7cm)                                      | 2 <sup>3/4</sup> x 8 <sup>3/8</sup> x 12 <sup>1/2"</sup> (7 x 21.4 x 31.7cm)  |
| Weight                | 7.5lbs (3.4kg)  |   |



| NPX TT                    |   |
|---------------------------|---|
| Collection                | 300 Series  |
| Type                      | Power Supply  |
| Standby Power Consumption | <0.5W   |
| USB                       | Micro USB socket (for updates)                              |
| Power Supply Output       | Type 1, Type 2  |
| Mains Supply              | 110 to 120V and 220 to 240Vac                               |
| Dimensions (HxWxD)        | 2 <sup>3/4</sup> x 8 <sup>3/8</sup> x 13" (7 x 21.4 x 33cm) |
| Weight                    | 12.35lbs (5.6kg)  |

ACCESSORIES

- Interconnects cable
- Speakers cable
- Power line
- Naim Fram stage



# COMPATIBILITY & CABLES

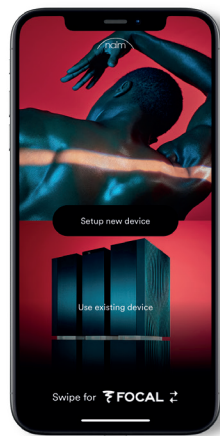
|             |            | LEGACY CLASSIC |        |        |         |         |         |          |          |         |         |         |          |           |
|-------------|------------|----------------|--------|--------|---------|---------|---------|----------|----------|---------|---------|---------|----------|-----------|
|             |            | NDX 2          | XPS DR | 555 PS | NAC 252 | NAC 282 | NAC 202 | S-CAP DR | H-CAP DR | NAP 200 | NAP 250 | NAP 300 | S-NAIT 3 | NAC-N 272 |
| NEW CLASSIC | NSC 222    |                | 1      | 2      |         |         |         |          |          | 4       | 5       | 6       |          |           |
|             | NAP 250    |                |        |        |         |         |         | 7        | 7        |         |         |         |          | 7         |
|             | NSS 333    |                | 1      | 2      | 8       | 8       | 8       |          |          |         |         |         | 8        |           |
|             | NAC 332    | 8              | 1      | 2      |         |         |         |          |          | 4       | 5       | 6       |          |           |
|             | NAP 350    |                |        |        |         |         |         | 7        | 7        |         |         |         |          | 7         |
|             | NPX 300 PS | 3              |        |        |         |         |         |          |          |         |         |         |          | 3         |

## BURNDY

1. Lead Assembly, Burndy, XPS to New Classic  
19 Way Single to 12 Way and 23 Way Burndy Cable (00-010-0241)
2. Lead Assembly, Burndy, 555PS to New Classic, Digital  
19 Way Single to 23 Way Burndy Cable (00-010-0242)  
Lead Assembly, Burndy, 555PS to New Classic, Analogue  
19 Way Single to 12 Way Burndy Cable (00-010-0243)
3. Lead Assembly, Burndy, New Classic PS to Legacy  
Streamer, not suitable for ND555, CD555 & NDS  
(00-010-0240)

## SIGNAL LEADS

4. Lead Assembly, New Classic Pre-amp, XLR to Legacy  
NAP200 DIN - XLR (x2) to 4 Pin DIN (00-010-0246)
5. Lead Assembly, New Classic Pre-amp, XLR to Legacy  
NAP250 XLR - XLR (x2) to Single XLR (00-010-0247)
6. Lead Assembly, New Classic Preamp XLR to Legacy  
NAP300 XLR, Left Channel, XLR to XLR (00-010-0248)  
Lead Assembly, New Classic Preamp XLR to Legacy  
NAP300 XLR, Right Channel, XLR to XLR (00-010-0248)
7. Lead Assembly, Legacy Preamp DIN to New Classic PA  
XLR, Left Channel, 4 pin DIN to XLR (00-010-0244)  
Lead Assembly, Legacy Preamp DIN to New Classic PA  
XLR, Right Channel, 4 pin DIN to XLR (00-010-0244)
8. Lead Assembly, Interconnect, 5 Pin DIN to 5 Pin DIN  
(00-010-0102)



# FOCAL & NAIM APP

## Enter a world of digital playback

We've long argued the case for simplicity: hi-fi that is easy to use will be more rewarding to live with. The Focal & Naim App, available on iOS and Android devices, provides simple yet comprehensive control over all network-connected Focal product or Naim components and your digital music collection. Naim users can adjust the volume, skip, pause and play tracks, scroll through album art, browse metadata, create playlists and store favourite radio stations.

### UPnP™ Streaming



Stream music from a PC, Mac or network-attached storage in high-resolution, 'better than CD' quality.

### Spotify® Connect



Native support for Spotify® to stream millions of songs from your portable device.

### TIDAL/TIDAL Connect



The lossless streaming service is integrated into the system for an immersive, high-quality sound experience.

### Chromecast built-In

#### (All Streamers - Mu-so, Uniti, Network Players)



An addition is native support for Chromecast built-In. This smart function creates a seamless link to hundreds of supported apps from your smartphone or tablet and streams directly to your Naim system.

### Roon Ready



Roon transforms the experience of browsing music. Beautifully laid-out metadata is located automatically, then interconnected by links to build a surfable, searchable digital magazine about your music collection.

### Internet Radio



Access thousands of internet radio stations and save your favourite presets for easy access.

### Bluetooth®



Pair with a Bluetooth device to instantly play your music. Also compatible with aptX for high-performance audio where supported by the device connecting to your system.

### Qobuz



Qobuz allows you to stream the most comprehensive CD-quality music catalogue currently available and the largest selection of albums in true high-resolution studio quality directly to your Naim music streamer.

### AirPlay



Stream music from your iPhone, iPad or iPod touch or from iTunes and Apple Music.

### USB



Play music from USB-connected storage devices.

### Digital Input



Boost audio from digital sources such as TVs, set top boxes, CD players or games consoles.

### Multiroom



Play music between any combination of our streaming products. Choose the same song in beat-perfect sync or play different music in different rooms in your home all via the Focal & Naim App.

### File Format Support



Play back lossless music files in WAV, FLAC, AIFF and ALAC format or stream MP3, AAC and Ogg Vorbis. DSD playback is also available for our range of Uniti, DAC, network players and streamers.

### HDMI ARC (Uniti and Mu-so 2nd Generation)



The Uniti Atom, Uniti Star and Uniti Nova, plus the Mu-so 2nd Generation, all feature an HDMI ARC (Audio Return Channel) input, so you can easily connect your TV and experience audiophile sound quality from your favourite shows, movies and games. You can control volume from your TV's remote, too.

### Wireless Updates (Mu-so, Uniti and Network Players only)



Over-the-air updates via the App will enable you to update your system at the touch of a button.

### Custom Integration



Seamlessly control connected Naim products from Crestron's, Control4's, Savant's or Elan's wide range of touchscreens, remote controls and apps.

---

# FOCAL *Powered by* naim

Enjoy an incredible sound experience

Find our products in 10,000 retail partner stores across the world, but also in our Focal Powered by Naim shops. These shops, dedicated to our brands, invite you to dive into our world, our savoir-faire and immerse yourself in the Focal & Naim sound.

## ASIA

Bengaluru  
Beijing - Guangzhou  
Seoul Gangnam-gu  
Seoul Hanam  
Taipei - Dubai

## AUSTRALIA

Adelaide - Melbourne  
Perth - Sydney

## EUROPE

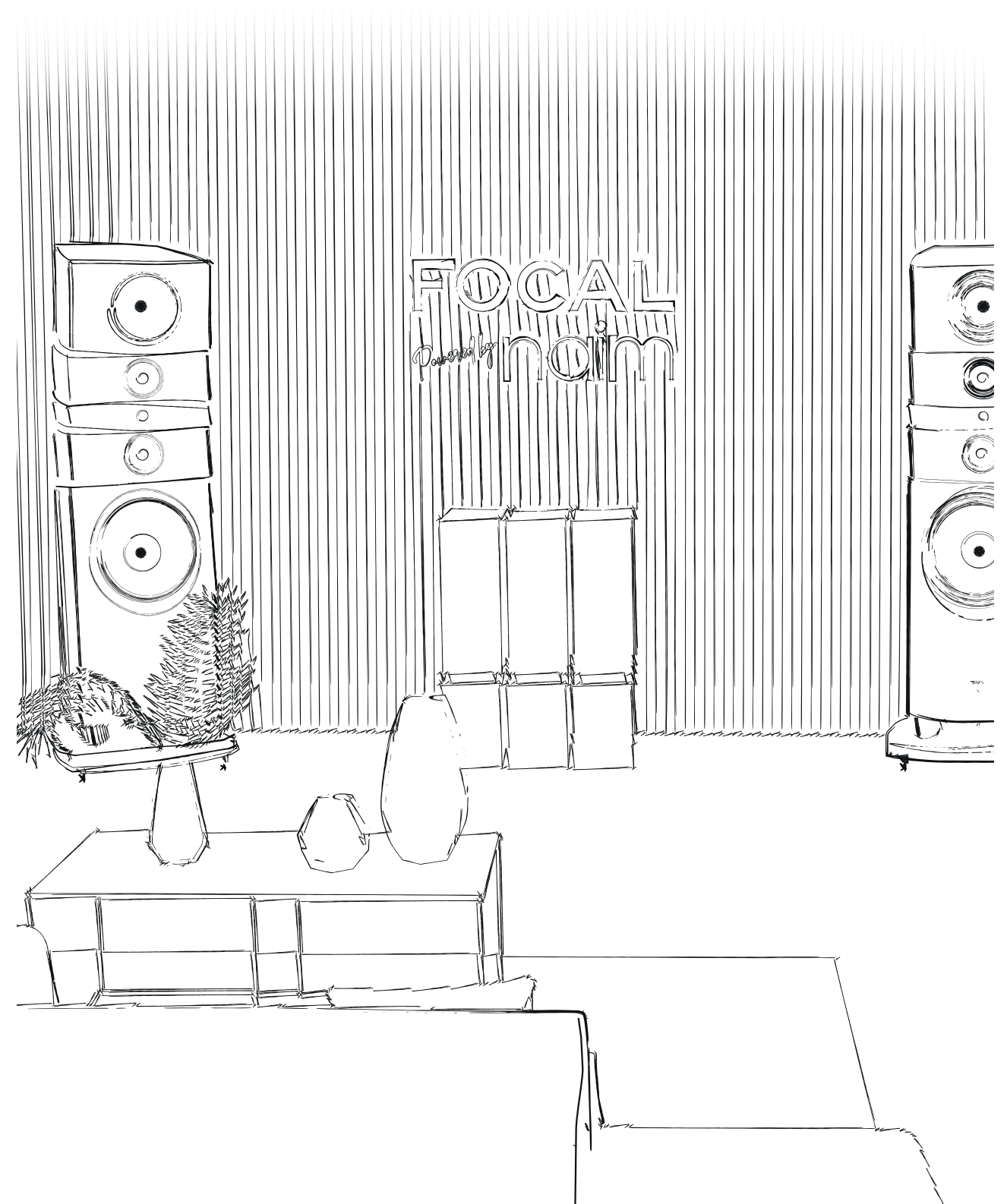
Cannes - Lyon  
Perpignan - Monaco  
Berlin - Bad Schwartau  
Sevenoaks - Budapest  
Prague  
Bucarest  
Vilnius

## CANADA

Barrie  
Lethbridge  
Saskatoon  
Winnipeg

## USA

Austin - Newport Beach  
Miami - Dallas - Houston  
Scottsdale - Las Vegas





For more information, scan the QR code  
or find us at:

**[www.naimaudio.com](http://www.naimaudio.com)**



Naim®

Salisbury, Wiltshire, England

Naim® is a registered trademark of Naim Audio, Focal® is a registered trademark of Focal JMLab.

For further improvement or to reflect legal or regulatory developments, FOCAL JMLab and NAIM AUDIO LIMITED reserve the right to modify the technical specifications of their products without notice. If need be, the images shown are for illustrative purposes only and may vary from the product sold.

Pictures: James M. Williams. SCCG/25/04/2023 - v1

PCCG1332 EN



3 544055 721499