



# SOLSTICE

SPECIAL  
EDITION

Introducing Naim Solstice  
Special Edition:  
A New Dawn for Music

Solstice Special Edition gives you everything you need – even an exclusive vinyl album – to enjoy your record collection as you never have before; just add amplification and speakers.

Lovers of the organic authenticity of vinyl can now enjoy it with musical purity and passion only a Naim Audio system can deliver – with the launch of Solstice Special Edition, the first turntable in the British brand's almost 50-year history. It comes partnered with a next-generation version of the iconic Naim Aro tonearm, an Equinox MC cartridge, Solstice Series Phono Stage, Power Supply and bespoke accessories set. Naim has created just 500 units of this Solstice Special Edition package.









## Solstice Special Edition

This unique package combines contemporary, living-friendly design with a classic Naim look. It offers incredible sound quality without the complications associated with performance turntables.

Legendary Naim Technical Director, Roy George, came out of retirement to work on the Solstice Special Edition project, working with the Naim R&D team to develop a package that combines the company's decades of audio expertise with the very latest engineering techniques.

It's the turntable we've always wanted to make, paired with the updated successors to iconic Naim products including the Aro tone arm, Prefix phono stage and Armageddon power supply.







Every element of Solstice Special Edition is precision engineered for consistently excellent performance, and painstakingly handcrafted by production technicians with years of know-how.







Aro has always set the benchmark for delivering incredibly natural, organic and lifelike musical performances. Its design allows the cartridge to extract enormous amounts of information from your records, but with an incredible sense of flow and correctness to the resulting sound. The updated Aro for Solstice Special Edition refines the design – and performance – further still. It retains the familiar three-point fixing – maximising the integrity of the critical interface with the Equinox cartridge – but also has two-point, slotted fixings for alternative cartridges. There's even finally a lift-lower device!

Engineered with Swiss-watch precision, the Equinox cartridge features a Moving Coil (MC) inner assembly sat in a solid aluminium housing machined from a single billet. To maximise stability and energy transfer, the stylus, cantilever and motor components are securely clamped to the cartridge body, which itself is attached to the headshell with a three-point fixing.

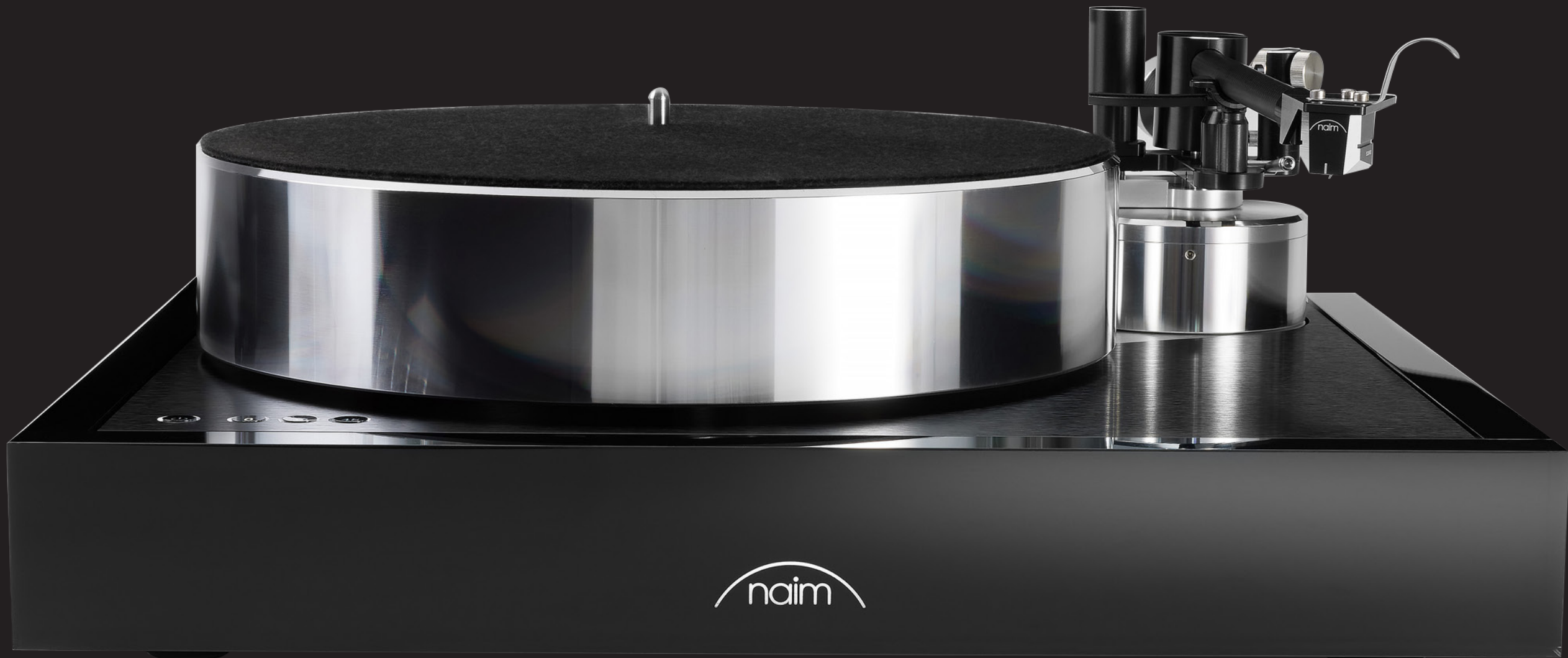
## Inside Solstice Special Edition

Solstice Special Edition features exquisite design touches throughout, combining core Naim technical philosophies - such as multiple levels of mechanical decoupling - with a celebration of beautiful materials.

Here are just a few highlights.

The new Aro Tonearm retains the original's design principles and excellence, but boosts performance further still by using improved materials - including tungsten and carbon-fibre - and adding an all-new, no-compromise bias, arm height and azimuth adjustments

The Equinox MC Cartridge features a microline stylus shape - closer to the original cutting lathe head to enable the retrieval of accurate high-frequency information - and a boron cantilever, a stiff-but-light design that faithfully transfers the stylus movements to the moving coils.



The turntable plinth consists of 47 wood layers skinned with metal to create an extremely low-resonance structure. The plinth features an island between the platter bearing and arm to keep these components critically aligned one to the other. A three-arm decoupling system isolates this island from the plinth, blocking any vibration caused by airborne sound or residual motor vibration.

The Solstice turntable features a magnetic bearing supporting a high-mass, highly polished aluminium platter, with a unique, self-calibrating motor drive system, meticulously delivering the Naim sound.







## Power Supply

The Solstice Series Power Supply is a bespoke design that powers both the turntable and the phono stage. For the ultimate performance, these two different power supplies are completely isolated, with no risk of interference.

Raising the game (and lowering unwanted noise) even further, the turntable power supply - like the Solstice Phono Stage – features Naim DR technology, providing the cleanest possible power. Clean power is a key component of any audio system, but it's even more vital in a turntable set-up, where the cartridge is incredibly sensitive to interference from electromagnetic radiation.

This Solstice design has another trick up its aluminium sleeve. It's also a smart power supply, which can detect the turntable has stopped and go into a 0.5W power sleep mode for standby. A small switched-mode power supply (SMPSU) enables this standby function, which is automatically disengaged when the turntable is in use – when an oversized toroidal transformer takes over power duties.



## Phono Stage

This is a glorious-sounding phono stage, which is also easy and flexible to use. It references previous Naim designs, such as SuperLine, but also our engineering pinnacle – the Statement amplifier. The Solstice Series Phono Stage is the first to feature the Discrete Regulators developed for that flagship – providing a smooth, stable power supply that is crucial for next-level performance.

For greater flexibility, fly-by-wire input switching, loading and gain were included. Fly-by-wire allows the controls to be conveniently located on the rear panel and the internal circuits ideally placed for optimal performance. You can use these controls on the go, for fast tuning: with 16 resistive and 16 capacitive loading settings, there are 256 possible tuning combinations for moving-coil (MC) cartridges.

Internally, MM and MC inputs have their own dedicated head-amplifiers, including an all-new, Class A MC design, configured to be inherently ultra-low noise - the only sound you hear is what's on your records.





Solstice Turntable

Parameter	Solstice Turntable High performance turntable with carbon ARO unipivot tonearm
Model Code	NVS TT
Power Supply input connector	Type 2
Speeds	33 1/3 rpm, 45rpm
Motor Type	High torque 24V DC brushless
Motor Control	Optical feedback
Tonearm Audio Output	5 pin Mini DIN
Front Panel	Clear Acrylic
Naim Logo	White illuminated
Logo Brightness setting	3 position switch - High, Medium. Low
Dimensions (H x W x D)	182mm x 420mm x 358mm
Weight	TBC

Parameter	Equinox MC Cartridge Moving Coil cartridge
Model Code	EQUINOX
Audio output	Individual 4 pin
Frequency Response	20Hz - 40kHz
Output voltage	0.4mV
Cartridge impedance	11 Ω
Recommended tracking force	2.2g - 2.4g
Recommended MC input resistance value	100Ω
Recommended MC input capacitance	1000pF (= 1nF)
Recommended MC Gain setting	High
Weight	8.0g

Power Supply  
and Phono Stage

Parameter	Solstice Series Power Supply DR regulated linear power supply
Model Code	NPX TT
Standby Power Consumption	<0.5W
Other Connectors	Mini USB (update only)
Front Panel	Clear Acrylic
Naim Logo	White illuminated
Logo Brightness setting	Button - High, Medium. Low
Mains Supply	110 to 120V and 220 to 240Vac
Dimensions (H x W x D)	70mm x 214mm x 330mm
Weight	5.6kg

Parameter	Solstice Series Phono Stage Switchable MM/MC phono stage with MC load adjustment	
	MM	MC (low & high gain)
Model Code	NVC TT	
Gain	42dB	61dB low gain and 67dB high gain (switchable)
Signal to noise ratio	83dB ref 5mV A-wtd	84dB ref 0.5mV A-wtd (both gain settings)
RIAA accuracy	+/-0.1dB	
IEC cut	(Partial) – 2dB at 20Hz and -3dB at 14Hz	
Cross talk	>75dB	
Max output signal	8Vrms	
THD+N	<0.005% ref 50mV input	<0.005% ref 1.5mV input
Loading	47kΩ and 100pF	1000Ω, 600Ω, 430Ω, 330Ω, 250Ω, 215Ω, 185Ω,165Ω,150Ω, 140Ω, 125Ω, 115Ω, 105Ω, 100Ω, 90Ω, 85Ω  100pF, 400pF, 700pF, 1000pF, 1300pF, 1600pF, 1900pF, 2200pF, 2500pF, 2700pF, 3100pF, 3400pF, 3700pF, 4000pF, 4300pF, 4600pF
Headroom	22dB ref 5mV input	23dB ref 0.5mV input low gain setting, 17dB ref 0.5mV high gain setting
Power Supply input connector	Type 1	
Audio input	Stereo RCA	Stereo RCA
Audio output	Stereo RCA, 5 pin DIN, 8 pin DIN	
Front Panel	Clear Acrylic	
Naim Logo	White illuminated	
Logo Brightness setting	3 position switch - High, Medium. Low	
Power input	+/-18V DC @300mA	
Dimensions (H x W x D)	70mm x 214mm x 329mm	
Weight	3.4kg	



Even the simplest idea can  
become the seed for something  
truly monumental

Naim founder, Julian Vereker MBE (1945 – 2000), was a successful racing car driver, self-taught engineer and entrepreneur with a deep passion for music.

Spending his spare time listening to the greatest artists of the 1960s and 70s, as well as his own friends playing live, Julian found the performance of playback at home fell woefully short in almost every area that mattered.

Not content with second best, he set about designing his own amplifiers and loudspeakers, completely unaware that he was laying the foundations for a range of iconic and award-winning hi-fi products that would reach well into the next century. Julian had no ideas of fame or fortune, he simply wanted to experience music replayed in the truest and purest possible form.

These were our founding values in 1973 and they continue to fuel every aspect of our progress today. The technology we use to achieve our aims will always change and evolve with time, but our ultimate goal remains the same – to bring our listeners a deeper and more intense experience of music.



Julian Vereker in  
his workshop





Designed in the UK  
by Naim Audio