

Naim Server backup to NAS

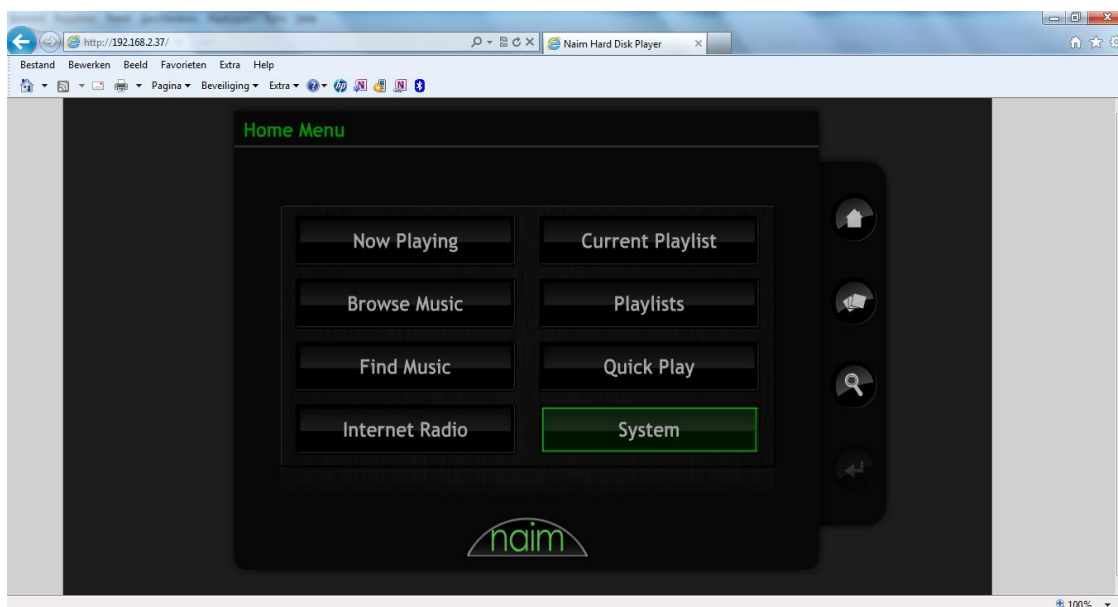
Requirements:

Naim Music Server (UnitiServe or HDX running software 1.7b)

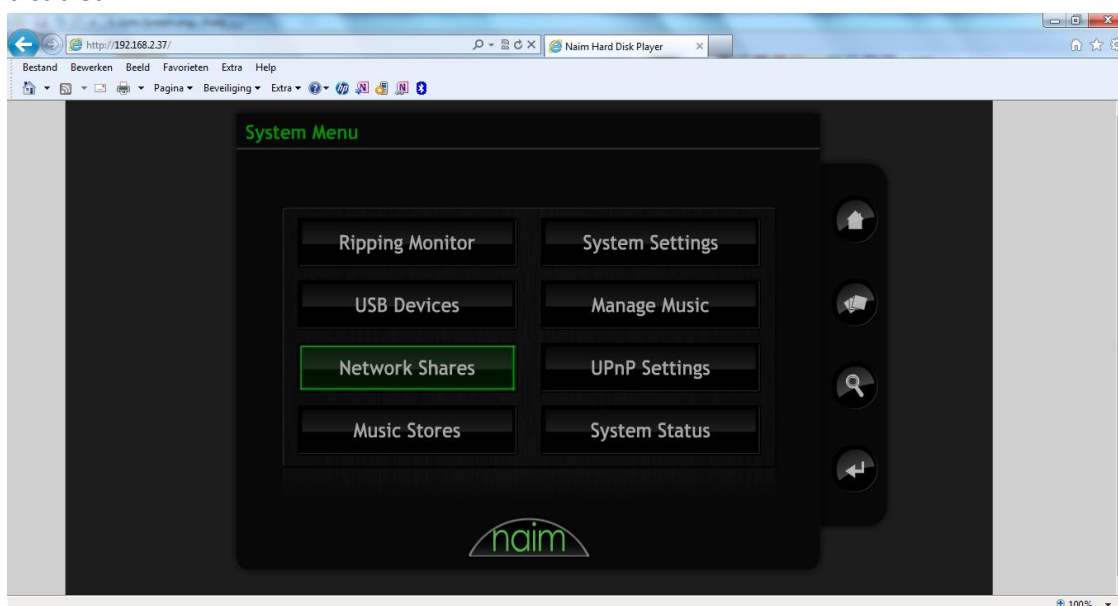
NAS (Network Attached Server) With shares configured as per “Setting up NAS as additional Server Storage” on the support.naimaudio.com website.

http://www.netserverapps.com/naimaudio/users/main.php?id=10277&category_id=27

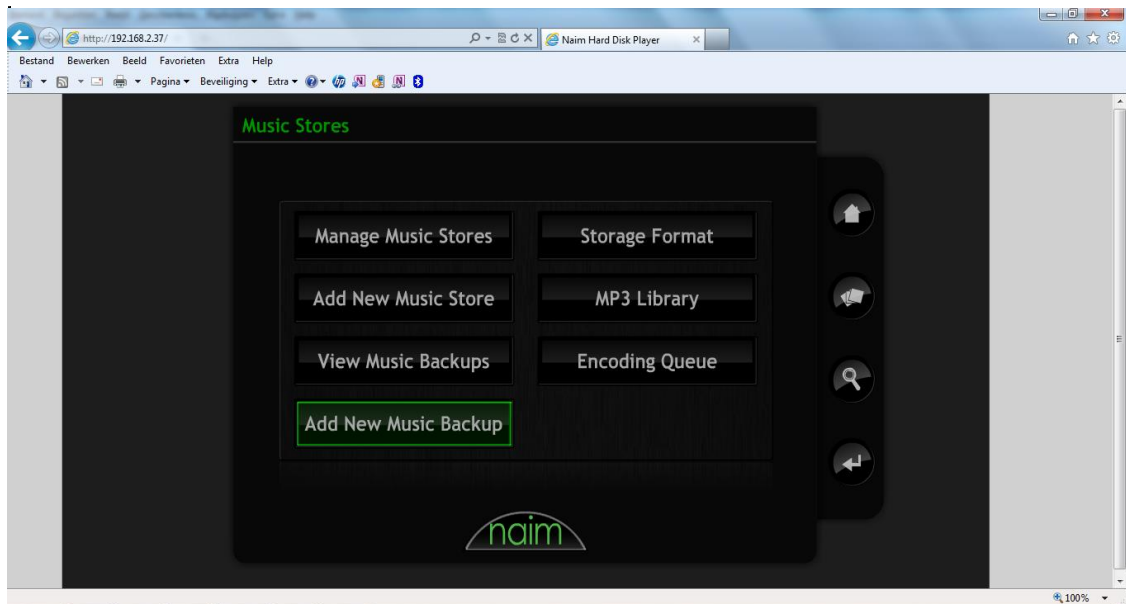
1. Go to the Naim server’s webpage, by typing the IP address or Hostname in a web browser like IE or Safari. The IP address can be found in the n-Serve app, or Windows DeskTopClient.



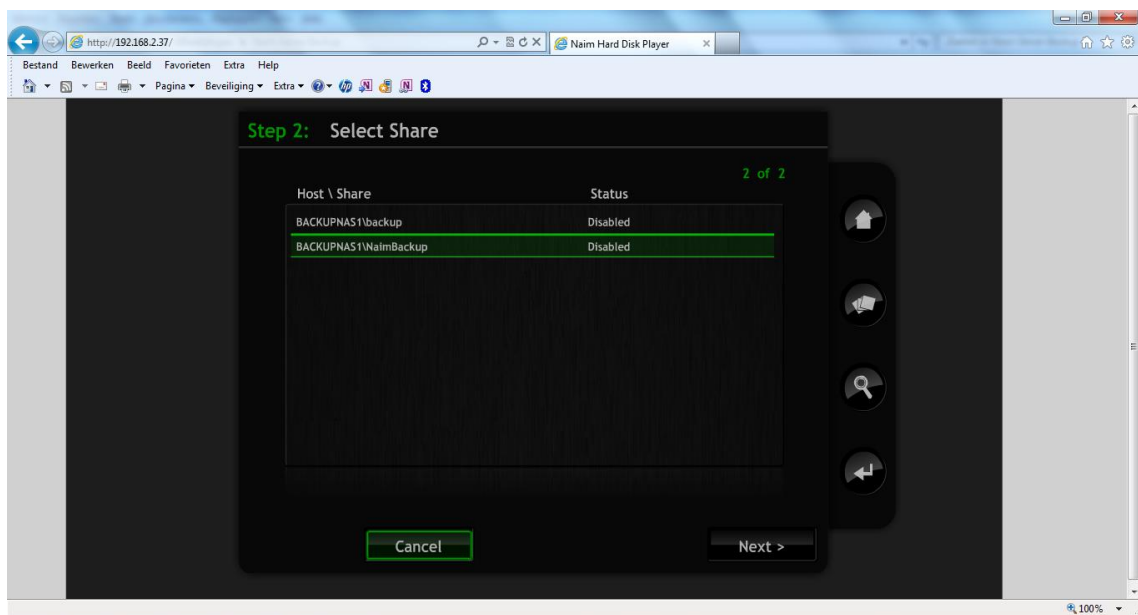
2. Go to System, and then Network shares. Check if the “Backup Share” is in the list, and disabled



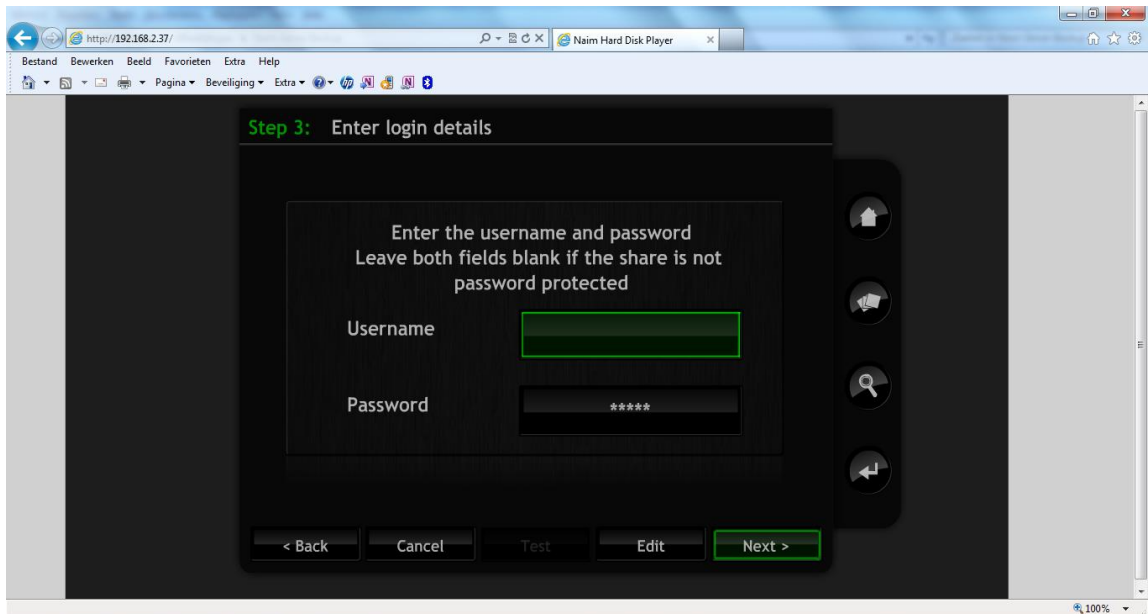
3. Now go back to System, Music Stores, Add New Music Backup. You'll get a warning that the share should be empty, click OK.



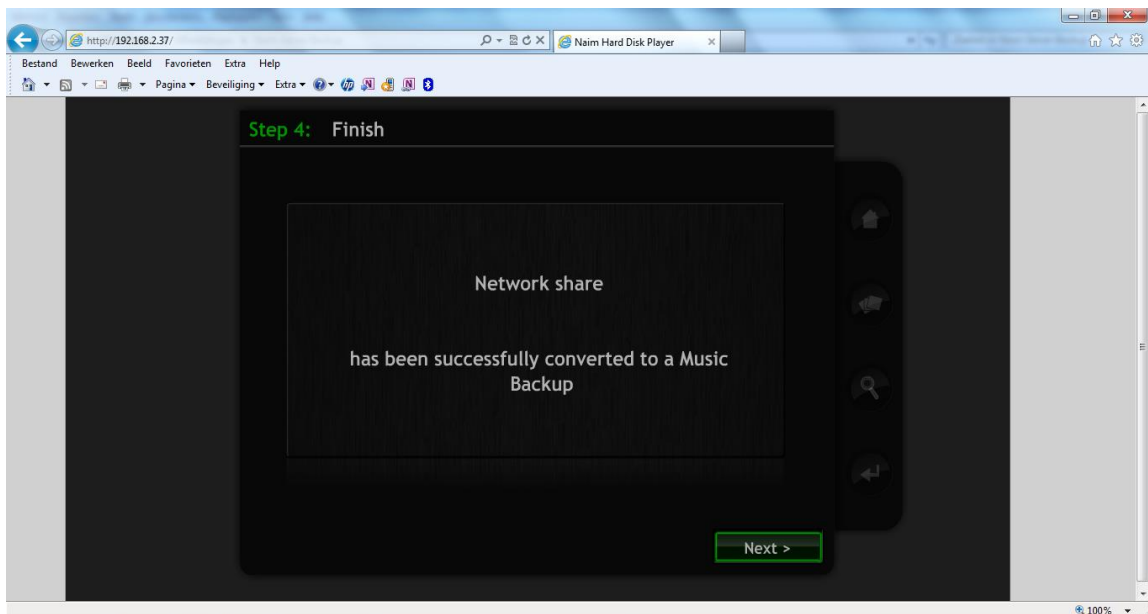
4. Here you should see the new backup share. Highlight and click next



5. Username and Password should be left blank, because the share has been set to read and write for guests.



6. Clicking next will successfully convert the share to a Music Backup.



7. By default the music will backup daily at 04:00, if preferred this can be changed in the Backup Scheduler in DeskTopClient for Windows, or n-Serve for Mac.
8. Its highly recommended that the NAS is set to static IP, or the IP address is reserved in the router so it won't change.